

Adult Social Care - Package Activity Information**Learning Disabilities (LD)**

	March 2010	July 2010
Residential/Nursing	101	108
Direct Payment	16	16
Supported Accommodation	47	48
Adult Placement	15	0
Personal Budget	53	65
Total	232	237

Mental Health (MH)

	March 2010	July 2010
Residential/Nursing	209	195
Direct Payment	4	5
Supported Accommodation	17	16
Adult Placement		
Personal Budget	7	7
Total	237	223

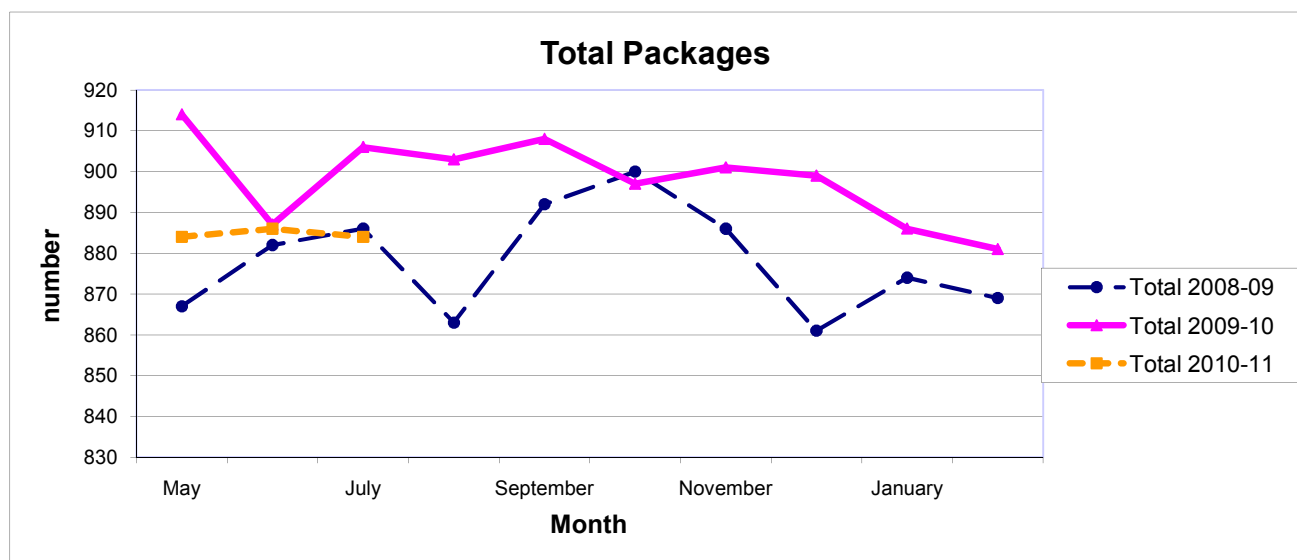
Older People (OP)

	March 2010	July 2010
Residential/Nursing	242	255
Direct Payment	10	10
Supported Accommodation	5	4
Adult Placement		
Personal Budget	30	29
Total	287	298

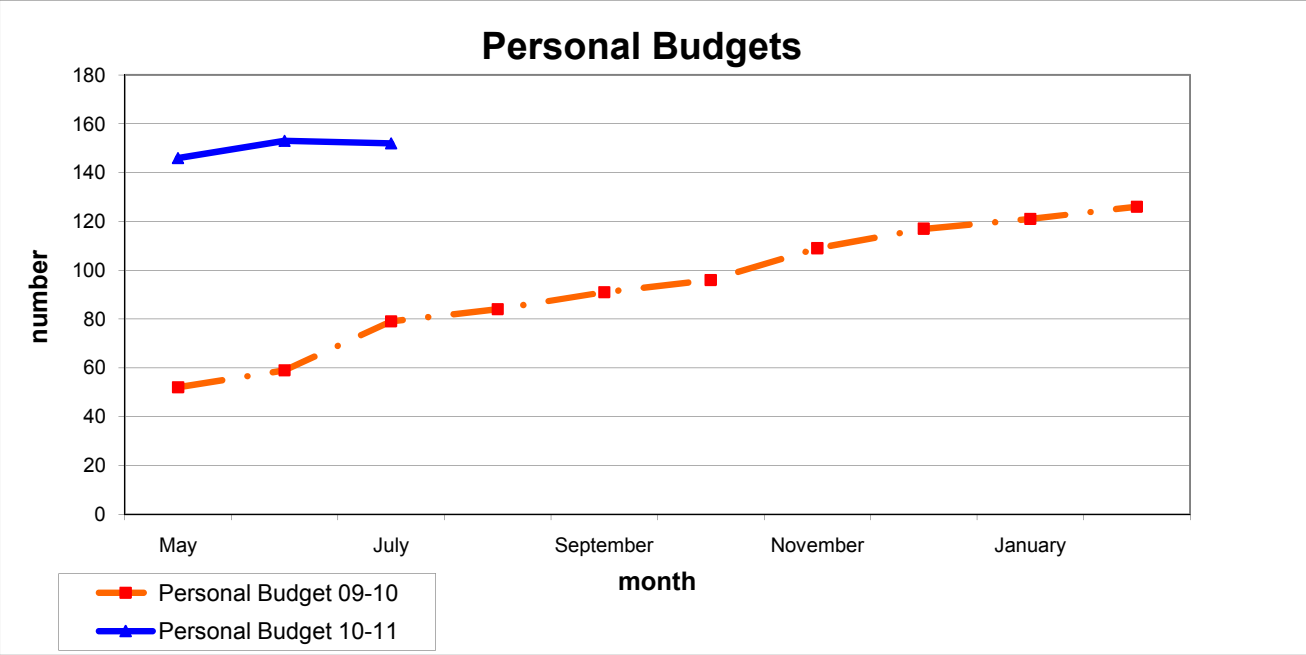
Physical Disabilities (PD)

	March 2010	July 2010
Residential/Nursing	24	23
Direct Payment	48	46
Supported Accommodation	6	6
Adult Placement		
Personal Budget	44	51
Total	122	126

The graph below shows the Total number of packages for 2010/11 across all groups compared with 2009/10 and 2008/09



The graph below shows the trend in Personal Budget for 2009/10 and 2010/11



|